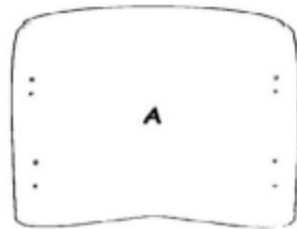
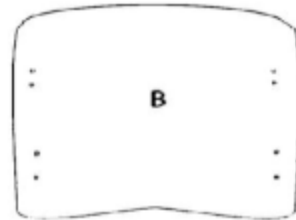


ELEMENTS



SIDE A - 1pcs



SIDE B - 1pcs

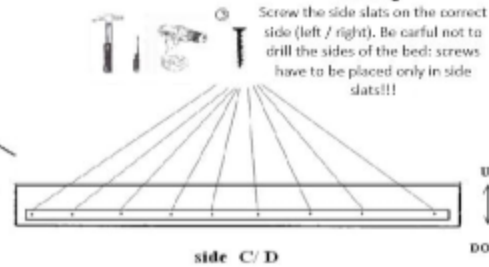
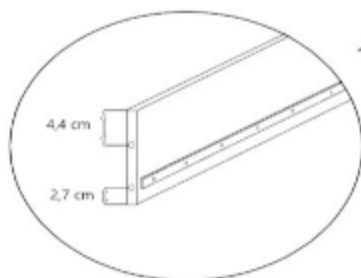
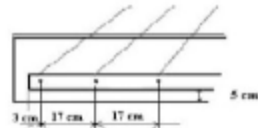
- screw cap - 16 pcs
- allen key - 1 pcs
- Confirmat - 16 pcs
- ① screw 2,5x20x24 pcs
- ② screw 3,0x35x2 pcs
- ③ screw 3,5x30x18 pcs

- Plastic batten rack overlay x 20 pcs (24 pcs model 160x80)
- support frame bar x 10 (12 pcs model 160x80)
- Bed side slats x 2 pcs
- connecting strip x 1 pcs
- 2 pcs side C/D
- 1 pcs side panel
- side panel 1/2
- 1 pcs handle rail

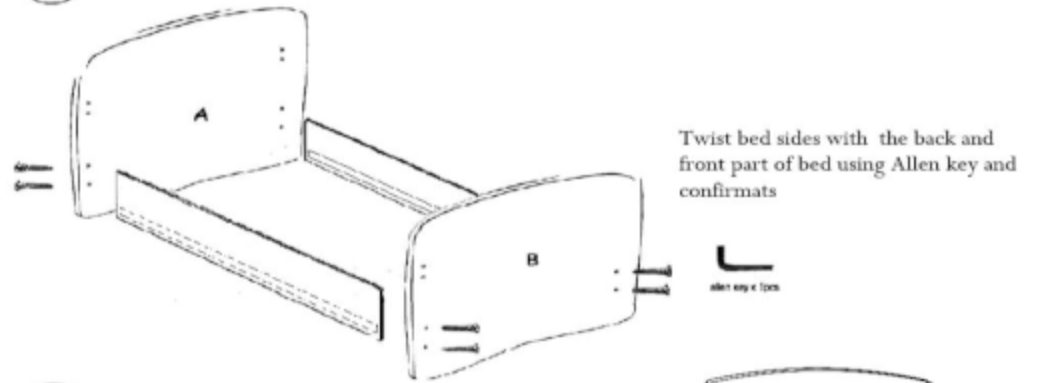
1

1A

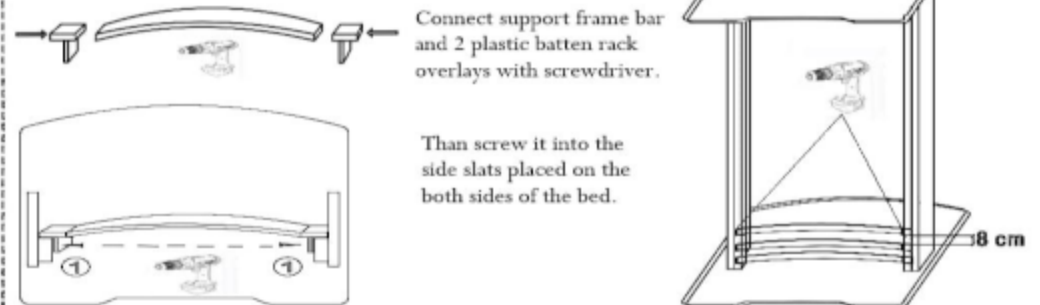
At first
Screw the side slats to the bed with screw No. 3 in 8 points (9 points model 160x80) keeping distances 17 cm (see figure 1A)



2



3



4

